

INTENSIVE DUO | PIGMENT CORRECTION

Our most powerful Cysteamine system for pigment correction, tone evenness and brightening

CYSPERA
SWITZERLAND



Cysteamine 7%
Isobionic Amide | Alpha Hydroxy Acid



Isobionic Amide 5%
Vitamin C | Retinol

INTENSIVE DUO

CYSTEAMINE | ISOBIONIC-AMIDE | AHA

CYSPERA
SWITZERLAND

INTENSIVE DUO is a high-performance, dual-step system (rinse-off mask + cream), designed for hyperpigmented skin seeking fast and effective results, helping to:

- Reduce dark spots in as little as 4 weeks
- Enhances skin clarity, radiance, and texture
- Supports anti-aging and skin resilience

PROVEN EFFICACY

Correct pigmentation with CYSTEAMINE | Modulate InflammAging with ISOBIONIC-AMIDE.



Courtesy of Dr Chau Yee Ng (Taiwan). Results after 16 weeks once daily



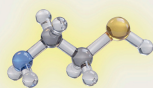
Courtesy of C. Adams (SkinSplendid, US). After 8 weeks

- ✓ **67%** pigment correction at 16 weeks¹
- ✓ **92%** improved overall skin appearance¹
- ✓ **100%** of volunteers saw improvement in hyperpigmentation²

CYSTEAMINE

The Physiologic Pigment Corrector

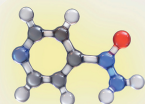
- Targets multiple steps of melanin production
- Respects melanocyte physiology
- Provides antioxidant support



ISOBIONIC-AMIDE

Next-Generation InflammAging

- modulates chronic low-grade inflammation associated with pigmentation and aging
- supports cellular energy metabolism (NAD⁺) and SIRT-1 pathways



WHO IT'S FOR

- Skin prone to moderate to severe pigmentation
- Melasma, post-inflammatory hyperpigmentation
- Can also be applied to elbows, knees, shoulders

HOW TO USE

Apply INTENSIVE once daily to unwashed skin

Start with 5 min and gradually increase to 15 min

Rinse off, then apply AGELESS

Daily for 16 weeks, then twice weekly for maintenance

LEARN MORE



www.cyspera.com/Intensive

STORAGE: Store between 15° to 30°C (59°-86°F).

CAUTION: External use. Avoid contact with eyes. In case of eye contact, rinse off with clear water. Keep out of reach of children. Do not use for pregnant or lactating women. Do not use on damaged or irritated skin. Do not use in case of known allergy to a component. Discontinue use and ask a doctor if signs of irritation or allergy appear. Contains Vitamin A. Consider your daily intake before use. Use an adapted solar protection in case of sun exposure. Avoid the use of retinol, AHA, or prescription creams while using Cyspera Intensive.

INTENSIVE INGREDIENTS: Aqua/Water, Cysteamine HCl, Isonicotinamide (Isobionic-Amide), Paraffinum Liquidum/Mineral Oil, Glycolic Acid, Potassium Cetyl Phosphate, Glycerin, Isopropyl Myristate, Cetyl Alcohol, Sodium Ascorbyl Phosphate, Arachidyl Alcohol, Butyrospermum Parkii (Shea) Butter, Ascorbyl Palmitate, Xanthan Gum, Behenyl Alcohol, Propylheptyl Caprylate, Octyldodecanol, Ethylhexylglycerin, Parfum/Fragrance, Arachidyl Glucoside, Tocopherol, Helianthus Annuus (Sunflower) Seed Oil, Disodium EDTA, Acetyl Carnosine, Amyl Salicylate, Tetramethyl Acetyloctahydronaphthalenes.

AGELESS INGREDIENTS: Aqua/Water, Glycerin, Isonicotinamide (Isobionic-Amide), Octyldodecanol, Cetyl Alcohol, Panthenol, Butyrospermum Parkii (Shea) Butter, Hordeum Vulgare (Barley) Seed Flour, Potassium Cetyl Phosphate, Propylheptyl Caprylate, Behenyl Alcohol, Squalane, Xylitylglucoside, Paraffinum Liquidum/Mineral Oil, Ascorbyl Palmitate, Sodium Ascorbyl Phosphate, Phenoxethanol, Glycine Soja (Soybean) Oil, Ethylhexylglycerin, Anhydroxylitol, Tetrasodium Glutamate Diacetate, Tocopherol, Xanthan Gum, Xylitol, Helianthus Annuus (Sunflower) Seed Oil, Retinol, Tasmannia Lanceolata Fruit/Leaf Extract.

Made in Switzerland by Scientis SA, Rue Ami-Lullin 12, CH-1207 Geneva.

References: (1) Mansouri P. et al. Br J Dermatol. 2015

(2) Sachdev et al. Cysteamine Isobionic-Amide Complex Versus Kligman's Formula for the Treatment of Melasma: Equal Efficacy and Rapid Onset of Action. J Drugs Dermatol. JDD. 2024

© Scientis 2026 | All Rights Reserved